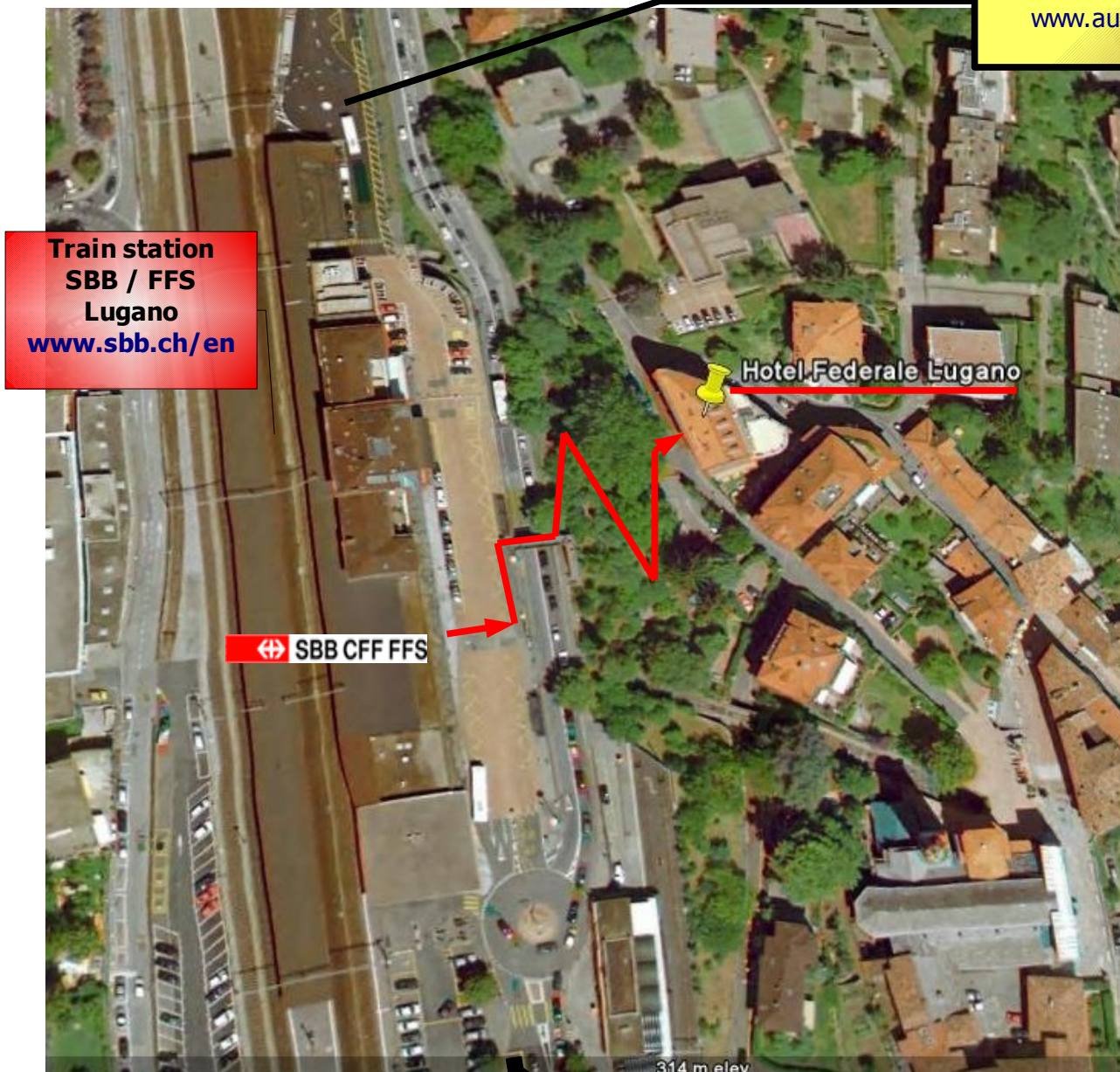




## How to reach the hotel on foot from train station FFS Lugano

Bus Bernina Express  
Bus Palm Express  
[www.autopostale.ch](http://www.autopostale.ch)



- go to main exit of Lugano railway station
- cross the station square
- walk over a little bridge
- follow downwards the only walking path
- within 3 minutes you are at the hotel

Shuttle bus to/from  
**Milan MALPENSA airport**  
[www.starbus.info](http://www.starbus.info)  
or  
[www.malpensaexpress.ch](http://www.malpensaexpress.ch)